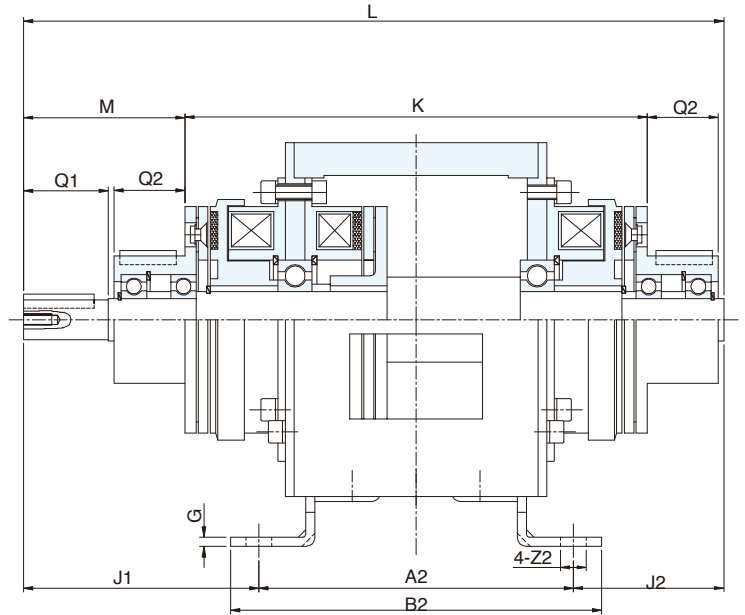
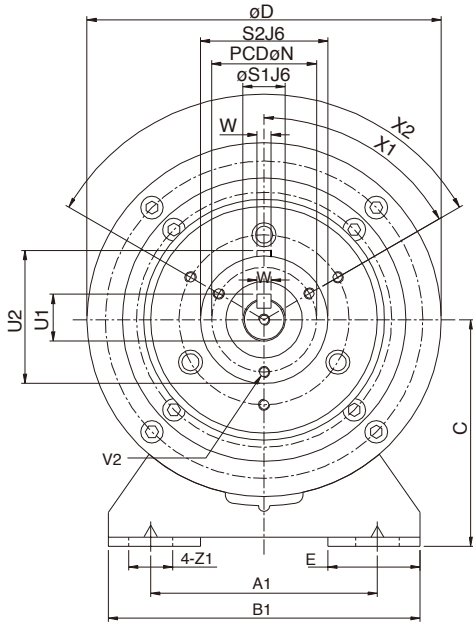


CFG Series

外露式雙電磁離合器內單電磁煞車組

Exposed Dual Magnetic Clutch and Internal Single Magnetic Brake Combination



型號 MODEL	CFG1S5AA	CFG2S5AA	CFG005AA	CFG010AA	CFG020AA		
靜摩擦轉距 [kgm](Nm) Static Friction Torque	1.1(11)	2.2(22)	4.5(45)	9(90)	17.5(175)		
功率 Power [24V](W) at 20°C	15	20	25	35	45		
懸垂荷重 Suspended load	25	45	70	100	180		
徑 方 向 Radius	A2	110	135	157.5	200	240	
	B2	130	160	183	230	270	
	G	3.2	3.2	4.5	6	20	
	J1	83.6	99.5	124	150	197	
	J2	53.6	59.5	74	90	114	
	K	163.2	190	222	272	348	
	L	247.2	294	358	440	551	
	M	57	72	93	114	143	
	Q1	30	40	50	61	80	
	Q2	25	30	40	50	60	
	V1	M4*0.7P*8L	M6*1P*11L			M10*1.5P*17L	
Z2	9	11	11.5	14	14		
軸 方 向 Shaft	A1	80	105	135	155	195	
	B1	110	140	175	200	240	
	C	80	90	112	132	160	
	D	125	150	190	230	290	
	E	32.5	35	42	45	47	
	F	68	81	97	110	129	
	N	37	47	52	62	74.5	
	S1	14	19	24	28	38	
	S2	45	55	64	75	90	
	U1	16	21	27	31	41.5	
	U2	47	57	67	78	93.5	
	V2	3-M4*0.7P*6L	4-M4*0.7P*8L		6-M5*0.8P*8L	4-M6*1P*12L	
	W	5		7		10	
	X1	3-120°		4-90°		6-60°	4-90°
	X2	60°		45°		30°	45°
Z1	15.5	20	24	28	28		
重量 Weight (kg)	6	9	17	29	58		
保護素子 Protective band	GD80KD10			GD80KD14			